



Aluminium

# Dualframe

## Windows

### Dualframe Window

The dualframe casement is a universal window suitable for installation in new buildings or refurbishment projects, in both residential and commercial applications.

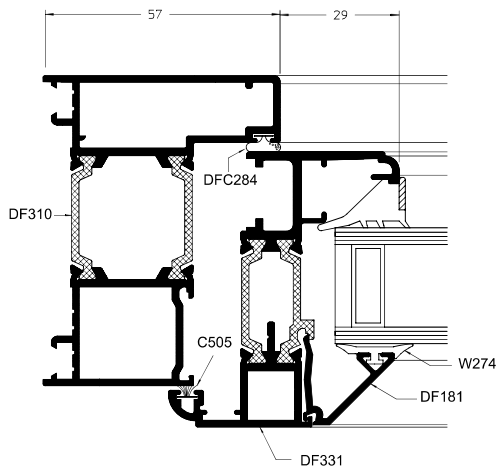
A robust all rounder it exceeds all current building standards, while maintaining a cost effective solution.

Available in top and side hung windows with your choice of hardware. Meets secure by design specification.

**DUALFRAME**

75mm Casement Window

**Extended Square Outerframe**



# Dualframe Doors



## Dualframe Door

The dualframe door is a high performance hinged door using the advantages of a polyamide thermal break and the robust lightweight strength of aluminium.

Capable of producing single and double doors in both open in & out options, it is a firm favourite both householders and architects for domestic and commercial projects.

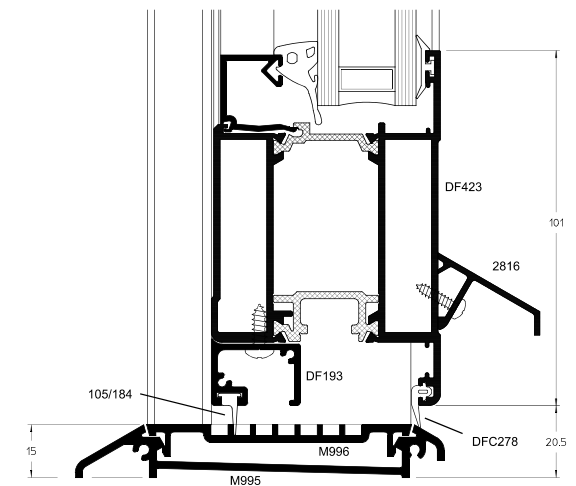
Accommodating widths of up to 1250mm and height up to 2500mm, and a huge choice of lock and handle options the dualframe door is almost certainly the door for your project.



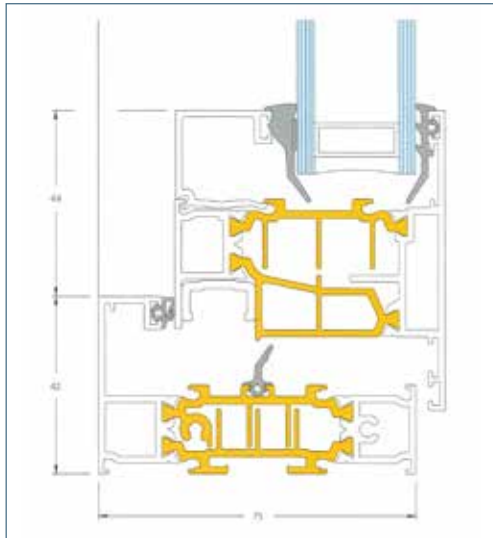
**DUALFRAME**  
75mm Dualsecure Door

**C** Open Out  
Glaze In  
Low Threshold

### General Arrangements



# Si Windows



## 75 Si

The SI (Super insulated) window suite is the first in a new generation of window and façade products utilising advanced polyamide thermal break technology. They provide high thermal performance without the need to resort to complex and costly sealed unit specification. Drawing from the dualframe window, the SI specification also incorporates industry leading weather performance and security.

The SI range is available in casement, tilt & turns, concealed vent, reversible and pivot windows making it the most comprehensive suite on the market today.

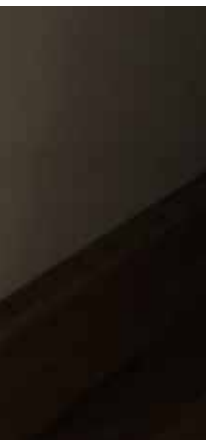




## The Energy Efficient Aluminium Window Swystem



Its use of a polyamide thermal barrier means that the SI window suite can achieve an A++ window energy rating. With double glazing U values of as low as 1.3w/M2K and triple glazed as low as 0.8w/M2K, it quite simply is one of the best on the market today.



# Origin Flush Window

## Twin Flush



stunningly designed,  
brilliantly executed...

Industry first internal & external flush  
casement window.

With no overlap, the flush window  
has a clean elegant finish which  
would look at home in any new build  
or traditional home.

# Entrance Doors

Our exclusive CD aluminium door frame is extremely versatile, allowing both timber and composite door slabs to be hung. The thermally broken frame marries perfectly with both SI and Dualframe suite to blend seamlessly in to your project.

With a choice of handle, including stainless steel and a variety of locks along with the combination of unique glass design allows for a truly personal entrance door.



# C125 Patio

Our C125 door is a thermally broken slide and lift & slide system that is both robust and durable, energy efficient and reliable.

The combination of strong profiles, polymer support and stainless steel rollers mean the C125 can achieve heights and sash widths of up to 3m!!

The "gutter style" designed frame allows for internal floor finishing to be flush with the inner framing and therefore avoids thresholds.







Safety concerns are met using our 6 hook multi point lock, operating 3 up and 3 down giving maximum peace of mind. Meanwhile the anti-lift block is fitted to prevent doors being lifted of the runner. Finally all C125's are internally beaded preventing the glass being removed externally.



# C125 Patio

The system is available in a 1,2,and 3 rail version, allowing a multi sliding options and upto 6 sashes to be manufactured with ease. These pictures show a dual rail door with both sashes able to move independently of each other. This affords the client the option of opening either side or both.



# Curtain Walling

While normally preliminary used in commercial/ retail, curtain walling profiles can give a dramatic contemporary look for the domestic market too.

Giving ultimate strength in a large screens to provide specific detail to a smaller project, curtain wall is extremely versatile.



# Origin Bi-fold

Imagine how your living space would be transformed without barriers between you and your outside space.

The Origin bi-fold is more than a simple bi-fold door with an industry leading 20 year guarantee, colour coded hinges and handles, finger safe joints and coloured Q-lon gaskets that will never shrink or harden. All this and the smoothest running roller system make Origin the only bi-fold worth considering.





elegant design, slim framing  
and the smoothest rollers  
available...

# Rooflights

Our high performance rooflights are designed to create a wonderful sense of space by drawing natural light from above and giving a view of the sky.

Whether its a lantern, saddle, cut out or the contemporary flat there's style to suit your project.

All glazing is safety glass and low E as standard. These can be combined with tinted, self cleaning or both to achieve not only a safe and energy efficient rooflight but a low maintenance one to.



Our most popular Ral's

7015

7016

7021

7039

9005

9006

9910

All our aluminium can be made to any standard Ral colour, from wild and vibrant to muted tones.

# Why aluminium?

Frame strength is very important when deciding on which window system to choose.

Aluminium is strong, durable and aesthetically pleasing and this is why it is Carroll's material of choice.

Aluminium not only combines strength and robustness with a lightweight structure, which means the frame won't twist or warp, not forgetting its thermal performance break technology.



6 Ballyoran Lane, Castlereagh,  
Belfast BT16 1XJ

Tel: 028 90481116  
Fax: 028 90483576  
E-mail: [info@carrollsglass.co.uk](mailto:info@carrollsglass.co.uk)  
Web: [www.carrollsglass.co.uk](http://www.carrollsglass.co.uk)

